



# DataSuite Installation and Activation Guide

---

This document provides a detailed overview of the installation and activation procedure for the **DataSuite v2.5.4.6** software. DataSuite allows you to configure and monitor a range of Fourtec data loggers within a single, unified Windows-based application. DataSuite is modular software, and shares its core functionality such as setup, calibration, defining new sensors, managing Email and SMS notifications, configuring reports, and firmware updates amongst devices such as DaqLink, DataNet, MicroLite II, MicroLite III, MicroLogPRO II and PicoLite.



## Contents

1.1.	Contacting Fourtec Support .....	1
1.2.	System Requirements.....	2
1.3.	Language Support.....	2
1.4.	Working with User Accounts .....	2
1.5.	Installation Procedure .....	2
1.6.	DataSuite Software Activation .....	6
1.6.1.	Software Activation Process.....	6
1.7.	DataSuite CFR Module Activation and Login.....	10
1.8.	Default System Password .....	12

### 1.1. Contacting Fourtec Support

---

If you have any questions regarding any aspect of the DataSuite installation or activations procedures, please don't hesitate to contact Fourtec Help Desk as follows:

**Web:** [www.fourtec.com/support](http://www.fourtec.com/support)

**Email:** [support@fourtec.com](mailto:support@fourtec.com)

To download updated versions of the DataSuite User Guide and DataSuite software/firmware visit: [www.fourtec.com](http://www.fourtec.com)



## 1.2. System Requirements

---

To work with DataSuite your system should be configured according to the following minimum specifications:

### Software

- Windows XP SP3, Server 2003 SP2, Vista, 7, 8.1 and 10 (32 and 64-bit)
- Minimum screen resolution: 1024 x 768 (800 x 600 not supported)

### Hardware

- Pentium 4, 2.0 GHz or better
- 512 MB RAM
- 250 MB available disk space for the DataSuite application

## 1.3. Language Support

---

DataSuite currently supports English, Chinese, French, Italian, Japanese, German, Russian, Portuguese and Spanish interfaces.

To toggle the software language, go to **Help > Language**. You must then restart DataSuite for the changes to take effect.

## 1.4. Working with User Accounts

---

The software installation procedure and license activation process must both be carried out by a user with Administrator privileges, otherwise there will be problems accessing the software by user's with standard non-Admin privileges.

Each specific user account that accesses the DataSuite software module can commence trial period for that specific account. However, as soon as a user with Administrator privileges activates the module with the unique license serial number, then all user accounts which had previously been in Trial mode will now be fully activated.

All users will have full access to the DataSuite module's settings and data files.

## 1.5. Installation Procedure

---

**Note:** If you are planning to use more than one Fourtec system e.g. DataNet and MicroLogPRO II, only one DataSuite software installation is required. Each product is managed by a specific product module within the DataSuite modular application.

**Note:** Remember that the installation and activation procedures must be carried out by a user with Administrator privileges.

Please read these instructions before proceeding with the installation process.



1. Commencing the installation process:

- If you have downloaded the DataSuite setup.exe file from the Fourtec website, the installation process should begin automatically.

2. The Wizard first installs **Microsoft .NET Framework 3.5**, if not already detected on the computer. The DataSuite software requires this platform in order to run. Follow the installation instructions to install the .NET Framework on your PC. This step can take up to two minutes to complete. Click **Finish** once installation is complete.

**Note:** During this step, Windows 8.1 and 10 users will be prompted to manually install .NET 3.5 if an existing installation is not detected. Users installing from a CD must run the **.NET 3.5 installer** shortcut located on the software CD. Users who downloaded the DataSuite setup from the Fourtec website may download the .NET 3.5 installer from the [Fourtec Download Center](#).

3. The main DataSuite Installation Wizard now resumes. Follow the installation instructions to install DataSuite on your computer. The installation process includes a silent installation of the latest version of the Silicon Laboratories USB driver. This driver is required for detection of the DataNet and DaqLink hardware.

**Note:** MicroLite II and III, MicroLogPRO II and PicoLite do not require driver installation.

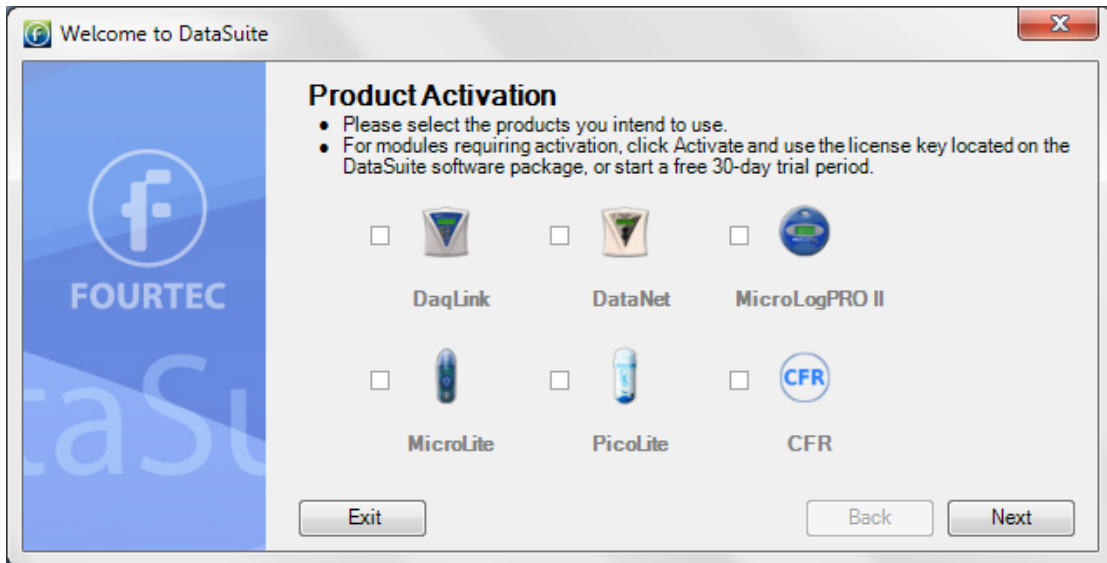
4. Click **Finish** at the end of the installation wizard. Double click the DataSuite shortcut



Launch DataSuite

on your desktop to launch the software.

5. The *Welcome to DataSuite* window will open, prompting the user to activate the relevant products before use.



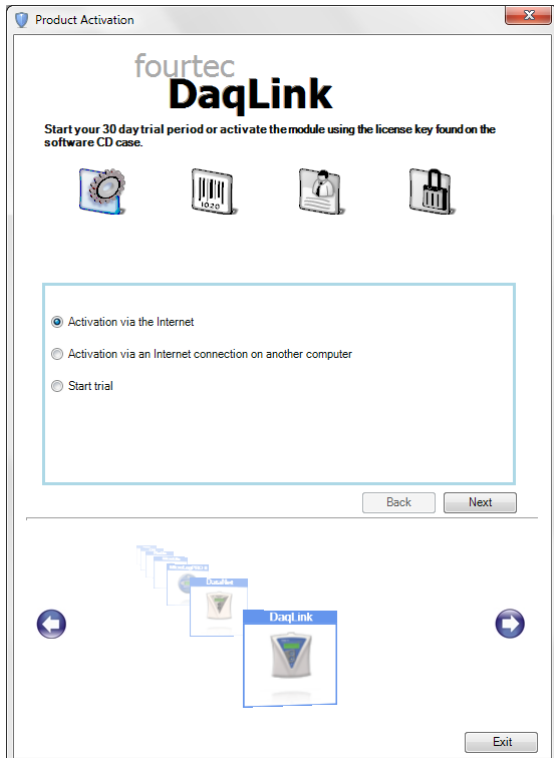
6. Select the checkbox next to the product or products you intend to use. For products requiring activation click **ACTIVATE** to launch the activation window. You may also



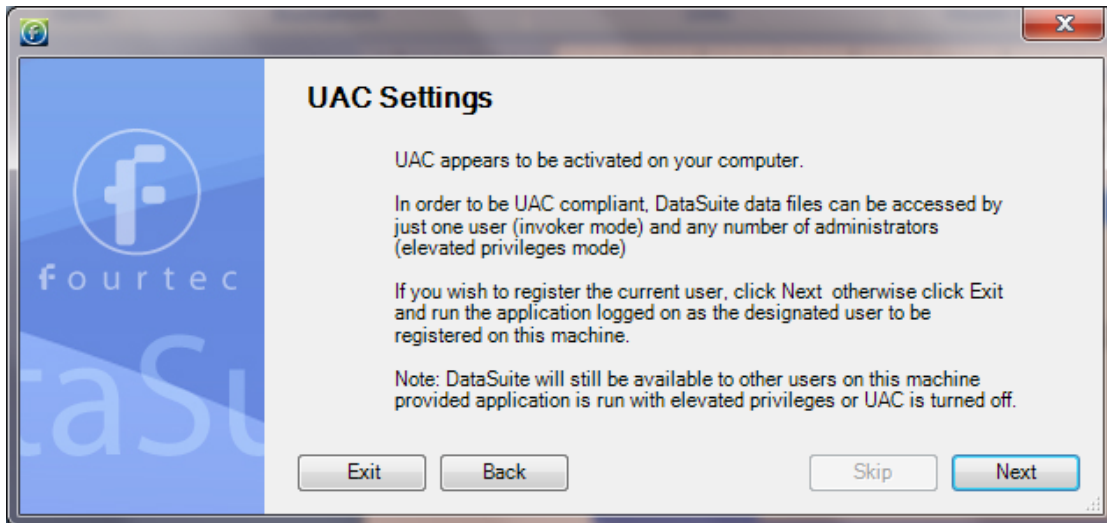
click **START TRIAL** to run a 30-trial prior to activating the product. DataSuite will not detect your devices unless you select one of these two options.

**Note:** MicroLite, MicroLogPRO II and PicoLite are license-free and therefore don't require activation. If using these products select the checkbox and click **Next**.

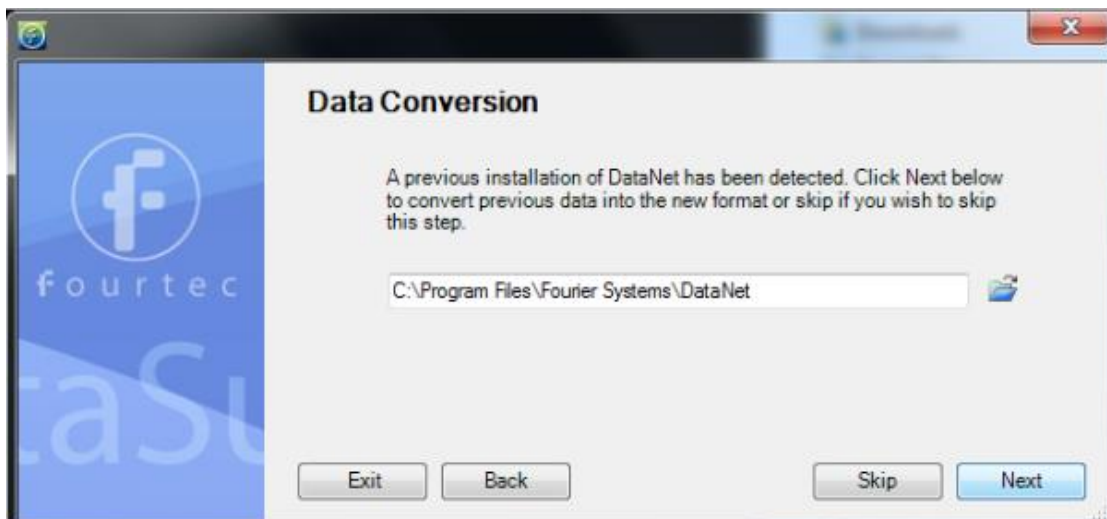
7. If you clicked **ACTIVATE** in step 11 above, the DataSuite software activation window will open on the relevant module e.g. DaqLink.



- You may choose to start the trial to commence the free 30-day trial period. Click **Start Trial** and then click **Next**. The full module activation can be completed at a later stage.
  - Once the trial period has started, DataSuite will detect the connected loggers. To detect more than one product module at the same time, you must ensure that each module is either in trial mode or activated using the unique software serial number.
  - When completing the necessary tasks in the Validation window, click **Exit** to return to the **Welcome** window.
8. If you did not choose to activate the product or if the product is license-free, click **Next** to continue.
9. In specific versions of Windows, the user may have User Account Control (UAC) settings activated. If so, the user will be prompted the following instructions. Select the relevant option.



10. If you have an existing, activated DataNet installation on the same computer, then DataSuite will detect it. You have the option to convert all data files from these previous installations into a format recognized by DataSuite. This will allow you to view all archived data in DataSuite as well as in the legacy software. Click **Next** to convert the data, or **Skip** to skip this step. If you skip, you will not be able to convert the data files later.



11. You have reached the end of the configuration process. Click **Finish** to launch the application.
12. Once the module is launched, connect the device to a USB port on your computer. It will automatically detect the logger as new hardware and the device will appear as a new icon in the DataSuite Map View.



## 1.6. DataSuite Software Activation

---

DataSuite requires certain modules to be activated using a serial number provided with purchase of the specific DataSuite module:

- DataSuite-DN (DataNet)
- DataSuite-DQL (DaqLink)
- DataSuite-CFR (CFR module)
- *DataSuite for MicroLite, MicroLogPRO II and PicoLite is free of charge and does not require activation.*

Each module can run for 30 days in Trial mode, but when this 30 period is over, the user will not be able to operate the software until a valid serial number is registered.

**Note:** The software activation feature protects Fourtec's intellectual property for both its software and hardware.

Please note that:

- Each serial number is good for unlimited installations on a single computer. You cannot install the software using the same serial number on another computer. If you have replaced your computer and must reinstall DataSuite – another user license have to be purchased.
- Activation can be performed from the computer with DataSuite installed, or if there is no Internet connection from that computer, then via another computer with Internet connectivity.
- CFR module cannot be activated/placed in trial mode without a valid user ID provided by the DatPass Admin software, which manages the DataSuite CFR platform.
- When the trial period for the CFR module ends, DataSuite will revert to the standard non-CFR environment unless activated.

### 1.6.1. Software Activation Process

**Note:** The software activation forms are all case sensitive. Incorrect entry will result in invalid activation.

To activate any one of the DataSuite modules, follow the instructions below:

1. Locate the DataSuite module serial number (SN). The SN label is found on the DataSuite box as well as on the software CD case.

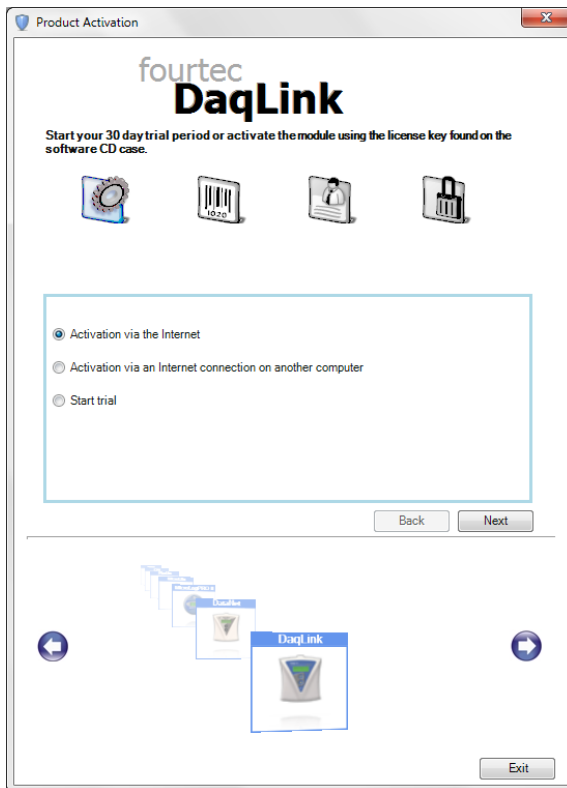
**Note:** If you cannot locate your serial number, contact your Fourtec distributor or Fourtec Customer Support directly.

2. Launch DataSuite. The activation wizard will open.
3. To open the activation wizard from within DataSuite go to **Help > Activate**.

- From the bottom of the wizard Home screen, select one of the module buttons to proceed to the activation screen for that module.



- Three choices are presented. Select the relevant option and click **Next** to proceed:



- **Activation via the Internet**  
Select to proceed with registration on the same computer on which DataSuite is running, ensuring it has a live Internet connection.
- **Activation via an Internet connection on another computer**  
Select if the computer on which DataSuite is running does not currently have Internet connectivity.



- **Start trial**

Select to commence the 30 day free trial period and continue working in DataSuite.

6. After selecting one of the two available options for continuing with the activation process, and after clicking **Next** in step 4 above, you will be prompted to enter the software SN. Enter the SN and click **Next**.

**Note:** Each serial number provides a single user license for the specific module. You cannot use a serial number already registered on another computer.

7. The activation process now differs, depending on which option was selected in step 4 above. Read the relevant section below for further activation instructions.

### Activation via the Internet

1. After entering the software serial number, a window requesting basic personal information will open. Enter the mandatory fields and click **Next**.

A screenshot of a 'Product Activation' window for 'fourtec DaqLink'. The window title is 'Product Activation'. The main heading is 'fourtec DaqLink'. Below the heading is the section 'Personal Information'. There are four icons: a gear, a barcode, a person, and a briefcase. A message reads: 'In order to be able to better assist you in the future we'll appreciate if you take a few minutes to fill out your personal information.' Below this is a form with the following fields: Name, Company, Email, Verify Email, Phone, State, City, Street, Zip, Country (set to Colombia), and Industry (set to Agricultural Sectc). There are red asterisks next to the State, City, Street, Zip, Country, and Industry fields. A checkbox for 'Sign up for the weekly newsletter' is present. At the bottom of the form are 'Back' and 'Next' buttons. Below the form is a navigation area with a left arrow, a stack of window icons (DataSuite, DataSuite, DataSuite, DaqLink), a right arrow, and an 'Exit' button.

**Figure 1:** Personal information registration window





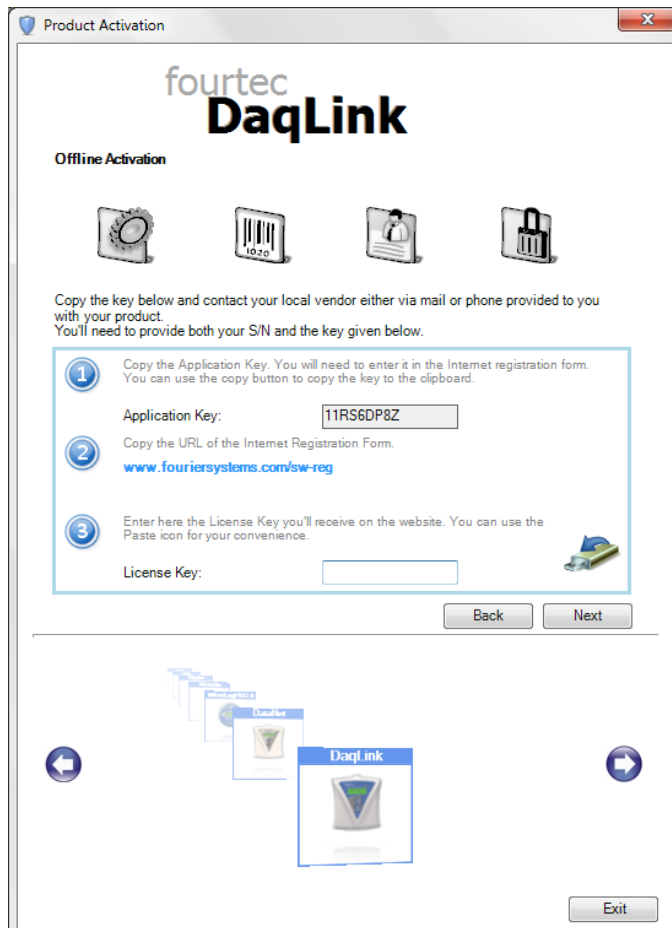
2. DataSuite will now establish communication with the Fourtec server to complete the activation process. If successful, a confirmation message will appear. In the event of any problem in the activation process, please contact your Fourtec distributor or Fourtec Customer Support.

**Note:** If your Internet connection is via a Proxy server, for example, then the registration process will fail and an error message will pop up.

3. Click **Close** to return to the DataSuite software.

### Activation via Internet Connection on another Computer

1. After entering the software serial number, a window providing additional activation instructions will open.



**Figure 2:** Activating DataSuite from another computer

2. Follow the steps as outlined in the window.



**Note:** It is recommended to generate a text file containing both the Application Key and



the Web registration form URL. Press the icon. Transfer this file to the computer with Internet connection, as the registration process must be continued from there.

3. Record the License Key obtained from the Web activation form. Enter it into the License Key field in Step 1 and click **Unlock**.
4. DataSuite will now establish communication with the Fourtec server to complete the activation process. If successful, a confirmation message will appear. In the event of any problem in the activation process, please contact your Fourtec distributor or Fourtec Customer Support.
5. Click **Close** to return to the DataSuite software.

## **1.7. DataSuite CFR Module Activation and Login**

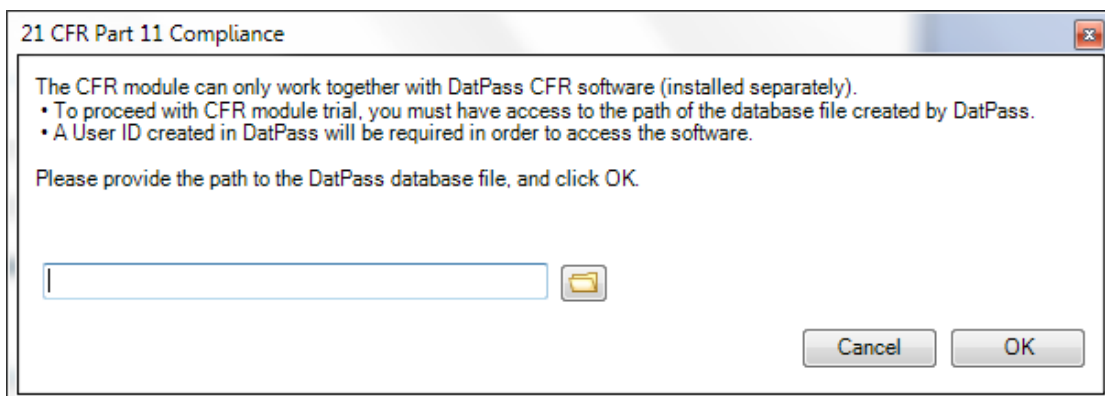
### **Overview**

Activating the DataSuite CFR module will make the DataSuite environment compliant with FDA 21 CFR Part 11 regulations.

However, prior to CFR module activation (or starting the trial period) you must first install the Fourtec DatPass Admin software, v4.0.0.0, on one other (or the same) computer in the network. Once DatPass is installed the Admin will be required to create a user ID which will enable DataSuite CFR users to login into the system. Without this user ID, the DataSuite CFR will not be able to login to DataSuite.

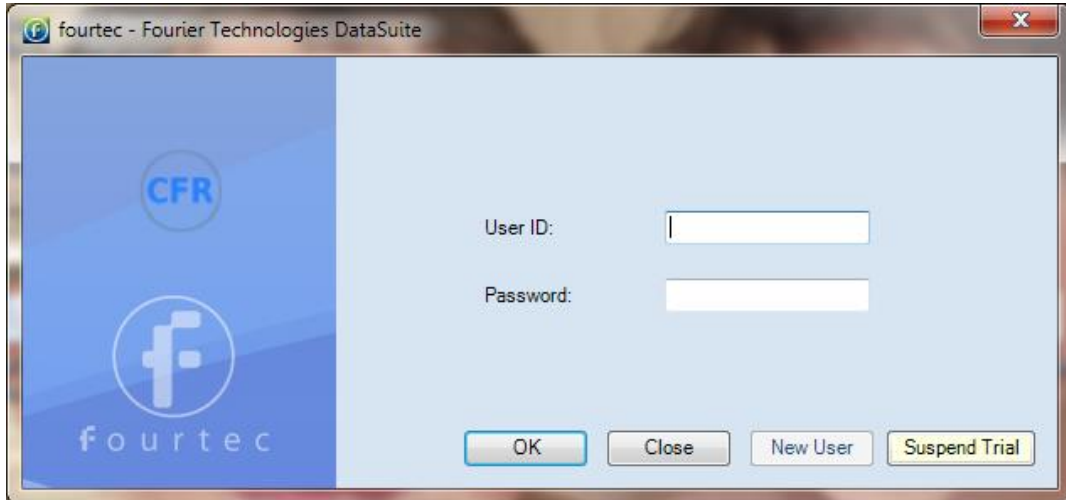
### **DataSuite CFR Login Instructions**

1. Prior to starting the CFR trial period or activating the CFR module, the Admin must first install the DatPass software and create a new user ID. See DatPass user guide for more details.
2. Once DatPass is installed and a valid user has been created, return to the CFR activation window in DataSuite to start the trial or activate the CFR module. Once either of these options has been selected, you must provide the path to the DatPass database file in order to continue. Click **OK**.





3. Once the database path has been verified, DataSuite will restart. Upon restart, the CFR Login dialog will open. For first time login, click **New User**.



**Figure 3: User Login Dialog**

4. Select the user via the drop-down menu, and proceed to enter the username and password associated with that user profile (as created in DatPass).

**Note:** If the system prompts a **No New Users** message, then request your DataSuite system administrator to create a new user in DatPass.

5. Click **OK**.
6. Once logged into the DataSuite CFR software, you will only have access to those features for which the Administrator has granted privileges.
7. To log off from the system, go to **File > Logoff**. The login dialog will remain open in case you wish to login again.

**Note:** Once you have activated DataSuite CFR, you cannot deactivate it and return to a non-CFR environment.

### **DataSuite CFR Login with no User ID**

In the event that the CFR module trial period has been started and a user ID is not available, click the **Suspend Trial** button in the CFR Login window. The CFR validation window will open up. Select the **Suspend trial period** option. DataSuite will then restart in a non-CFR environment. The number of trial days remaining is suspended.

Once DatPass is installed and a user ID is created, you can always return to the CFR validation window and click **Resume trial period** to restart DataSuite and login to the CFR environment.



## 1.8. Default System Password

---

Throughout the software you will be required to enter a password to perform certain functions such as calibration or firmware update.

**Note:** The default password is 1234.

### To change the password:

1. In the **Password** dialog box, click **Change Password** to open the **Change Password** dialog box.
2. Enter the current password in the **Current Password** text box.
3. Enter the new password in the **New Password** text box.
4. Enter the new password a second time in the **Confirm New Password** text box to confirm your new password.
5. Click **OK**.

**Note:** The password must include at least 4 characters and is case sensitive.