



Quick User Guide

DataSuite

Sept 2024

Introduction

DataSuite is free software that enables data monitoring & analysis, as well as lifetime data storage that can be reviewed in graphs, tables, and logger statistics, printed or exported into Excel files.

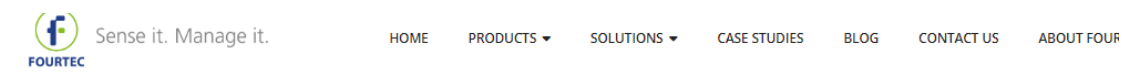
DataSuite is designed for Windows OS only.

Download and Install DataSuite

Go to Fourtec's website:

<https://fourtec.com/download-center/>

Click on Download.



Download Center

Software

Download DataSuite software	DOWNLOAD
Download DatPass software	DOWNLOAD
Download FourtecLite mobile app for Android devices	

After download, install and follow the wizard.

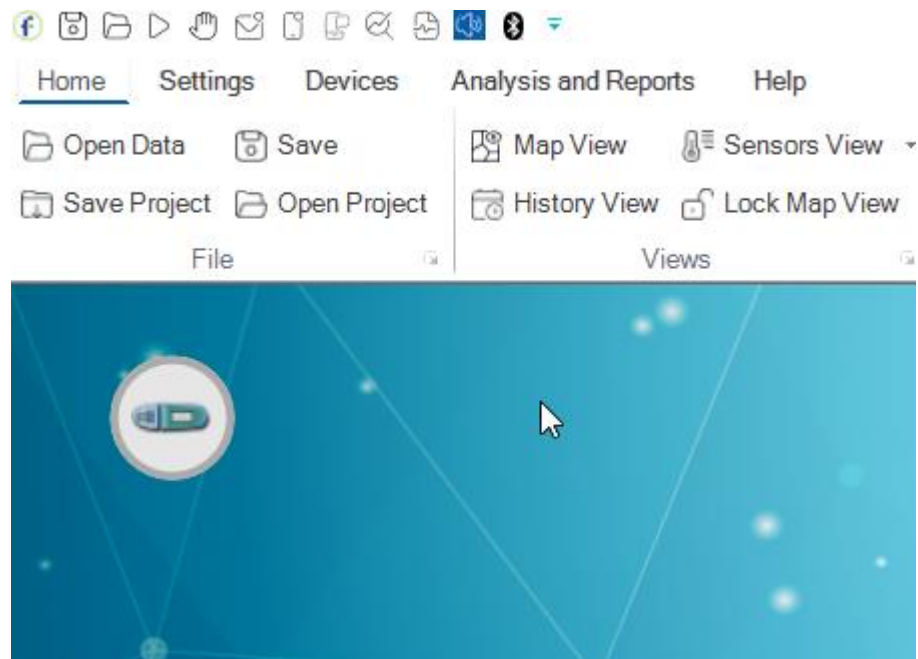
Open the DataSuite.

Connect and configure Logger to DataSuite

Connecting the logger

Connect your logger with the USB, BT or WIFI (depending on the logger).

The logger appears on the screen as such (below an example of MicroLite)

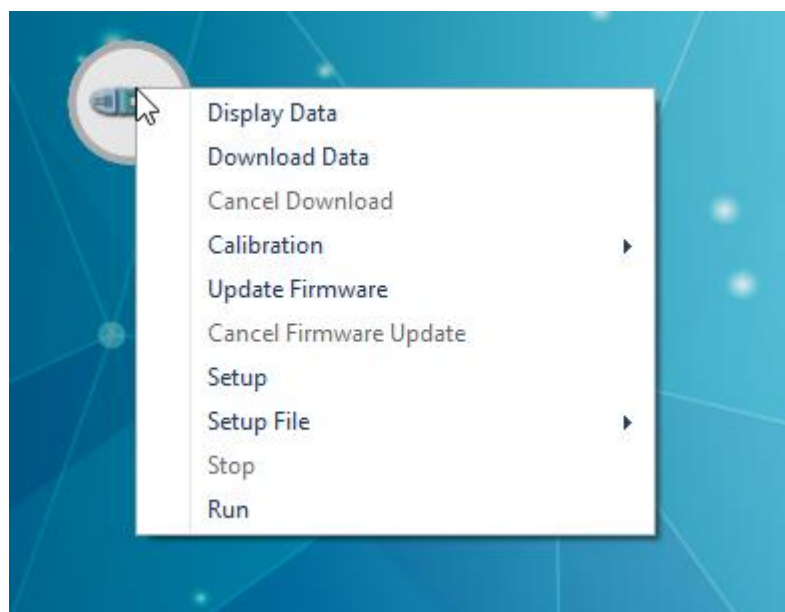


The logger is connected.

Setting the logger

Open Setup window

To start logging and for setup hover your mouse on the logger and right click



Go to Setup

Window opens with the options for setup.

There are 4 tabs for setup:

1 – properties

2 – sensors

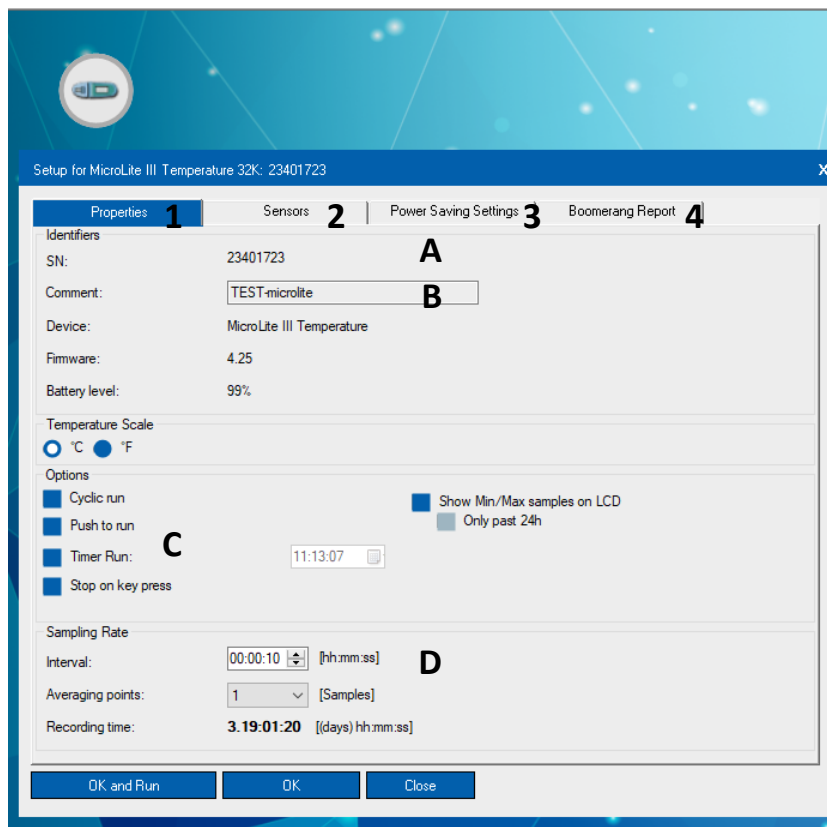
3- Power Saving Settings

4 – Boomerag Report.

After setting up the details as you need, click on OK and Run. The logger will start logging according to the configuration.

In this document we will focus on Properties and Sensors. For detailed instructions go to the full user guide.

Properties (1)



Item	Name	Short description	Details and instructions
------	------	-------------------	--------------------------

<https://fourtec.com/> INFO@FOURTEC.COM T: +972 3 901 4849
 21 HAMELACHA ST. POB 11681, ROSH HA'AYIN, 48091, ISRAEL

A	S/N	The Serial number of the device	The serial number of the device is shown here.
B	Comment	Name of the device	You can edit the name to an easier recognition of the device and its location
C	Options	Select run type and setting for the run	<p>It is possible to select more than one option</p> <p>For example for FourtecLite select- Timer Run – please mind that the starting time of the run will set according to the hour set.</p> <p>And stop on key press – it will stop logging when a key is pressed on the device.</p> <p>Show Min/Max and select the 24 hours – it will display the min/max</p>
D	Sample Rate	Set the interval with which the sample will be taken	<p>For example every 10 min write: 00:10:00</p> <p>It is possible to see the calculated recording time according to the memory and the sample rate.</p>

Sensors (2)

Setup for MicroLite III Temperature 32K: 23401723

Properties | **Sensors** | Power Saving Settings | Boomerang Report

Sensor Configuration

Internal NTC (ML II) [°C]

A Alarm **B** **C** [°C]

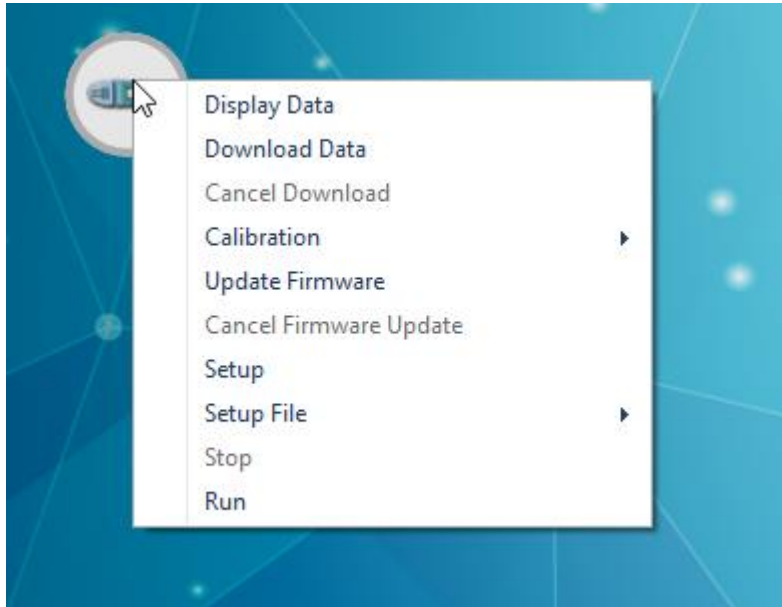
OK and Run **OK** Close

Item	Name	Short description	Details and instructions
A	Alarm	Check box to enable the alarm	Check the box to enable the alarm.
B	Min Range	The min optimal range of the desired measurement	Insert the min value of the accepted measurement In case reading is below, the alarm will go on
C	Max Range	The max optimal range of the desired measurement	Insert the max value of the accepted measurement In case reading is above, the alarm will go on

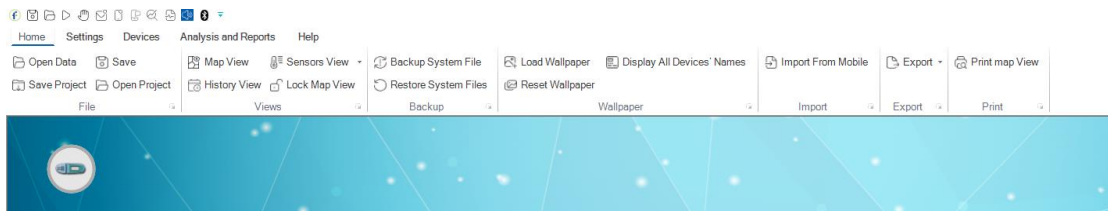
Download Data from Logger to DataSuite


Insert the logger the data automatically is downloaded to the software.


You can also right click on the logger and select “download data”



Open Data in History View



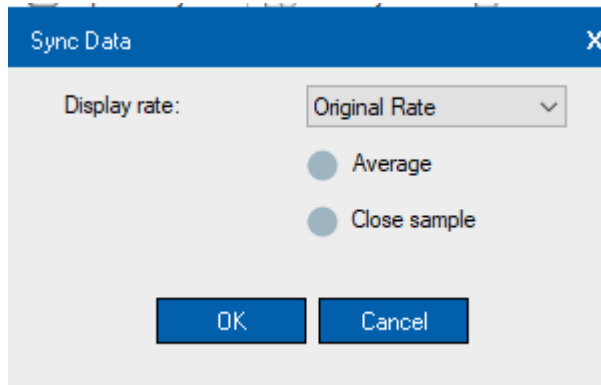
In the quick access icons click on  or in the Home menu press Open Data

 Open Data

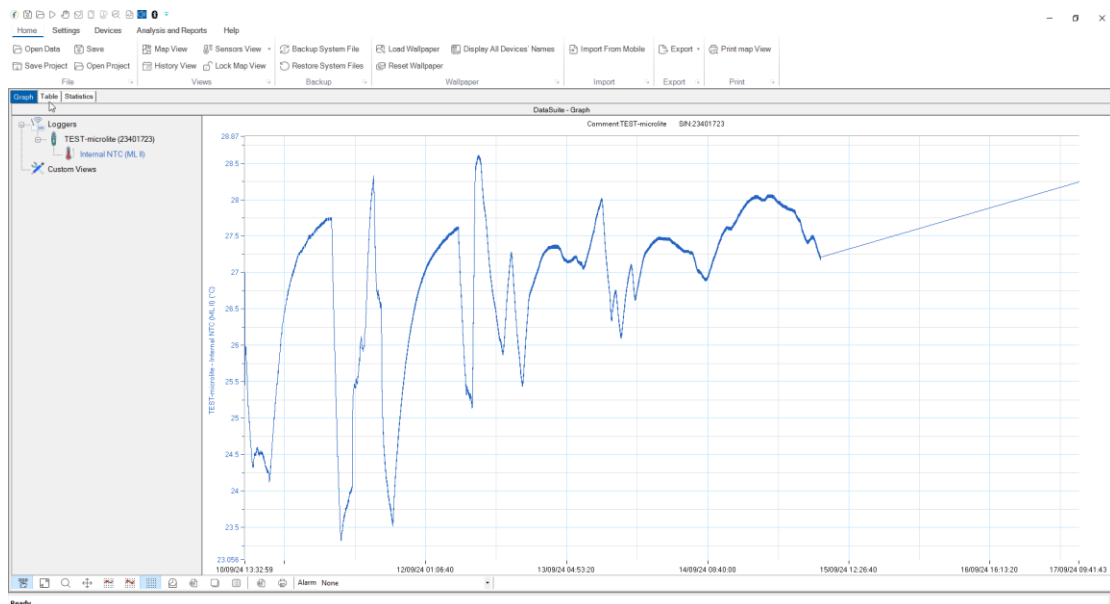
Select the time frame of the data

Select the device/s that you wish to view

And click OK



The data appears in a graph as shown below:

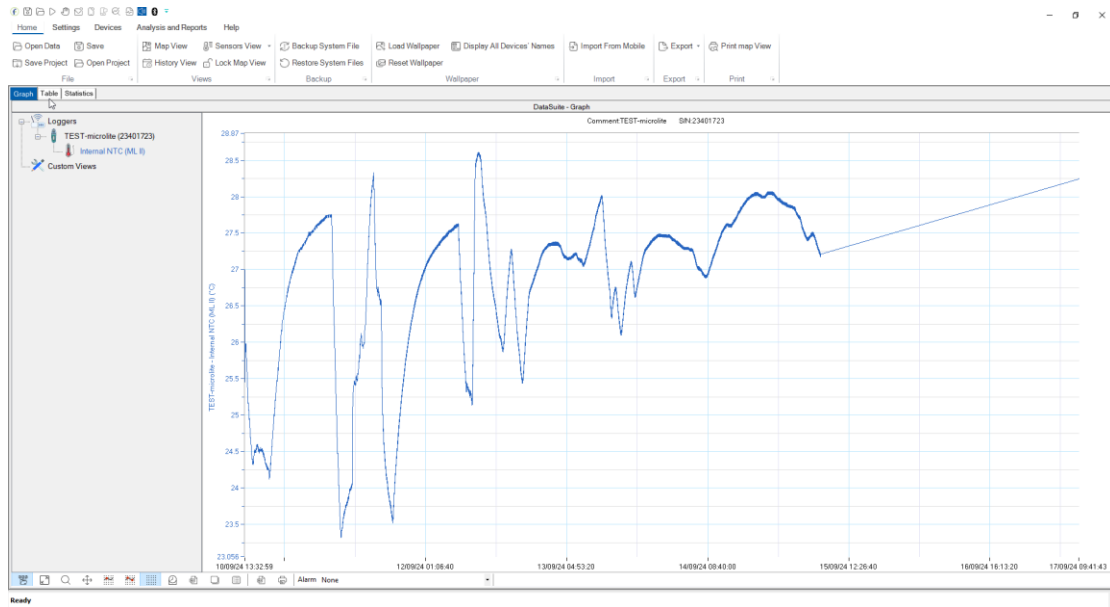


View in Table

Click on the Table tab to change to Table view.

Print Data

Click on the Printer icon to open the printer dialog.



Export Data to Excel

Click on the Export to Excel icon on the bottom tool bar

An excel will open with the data